

ENCLAVE AT MANGONIA PARK

BEING A REPLAT OF LOTS 1 THROUGH 12, INCLUSIVE, AND LAKE SHORE DRIVE, PLAT OF OXFORD VILLAGE, ACCORDING TO THE PLAT THEREOF, AS RECORDED IN PLAT BOOK 36, PAGES 176 AND 177 OF THE PUBLIC RECORDS OF PALM BEACH COUNTY, FLORIDA, LYING IN SECTION 5, TOWNSHIP 43 SOUTH, RANGE 43 EAST, TOWN OF MANGONIA PARK, PALM BEACH COUNTY, FLORIDA.

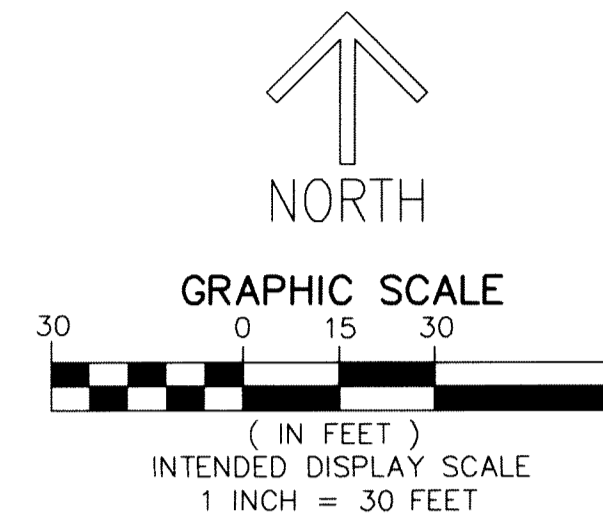
SHEET 2 OF 4

THIS INSTRUMENT PREPARED BY
DAVID P. LINDLEY
OF
CAULFIELD and WHEELER, INC.
SURVEYORS - ENGINEERS - PLANNERS
7900 GLADES ROAD, SUITE 100
BOCA RATON, FLORIDA 33434
OFFICE (561)392-1991 FAX (561)750-1452
CERTIFICATE OF AUTHORIZATION NO. LB 3591

101

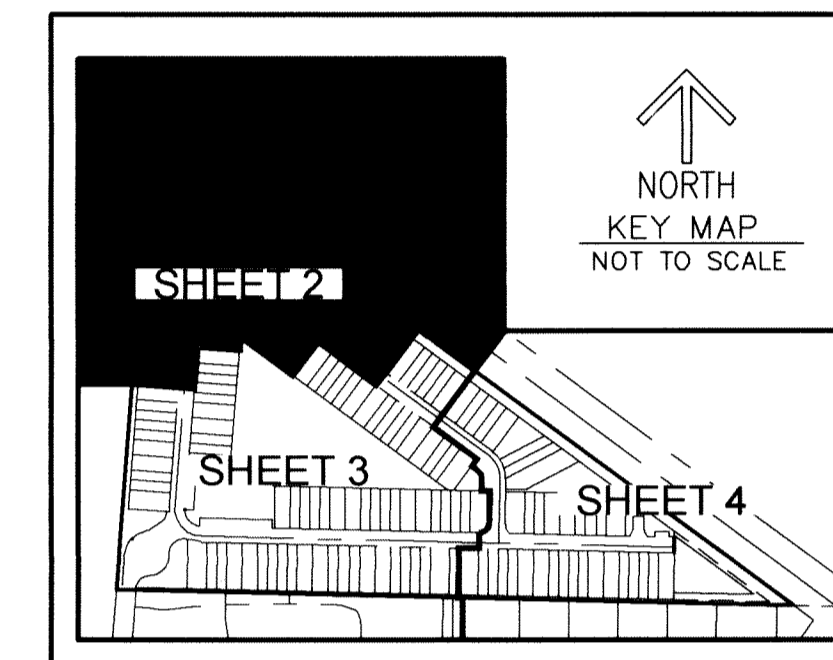
NW CORNER OF SECTION 5,
TOWNSHIP 43 S., RANGE 43 E.
NORTHING: 884563.898
EASTING: 955167.994
(P.B.C. PUBLISHED COORDINATES)
FOUND PALM BEACH COUNTY
BRASS DISK IN CONCRETE

NW CORNER OF SECTION 5,
TOWNSHIP 43 S., RANGE 43 E.
NORTHING: 884563.898
EASTING: 955168.78
(PER PLAT)

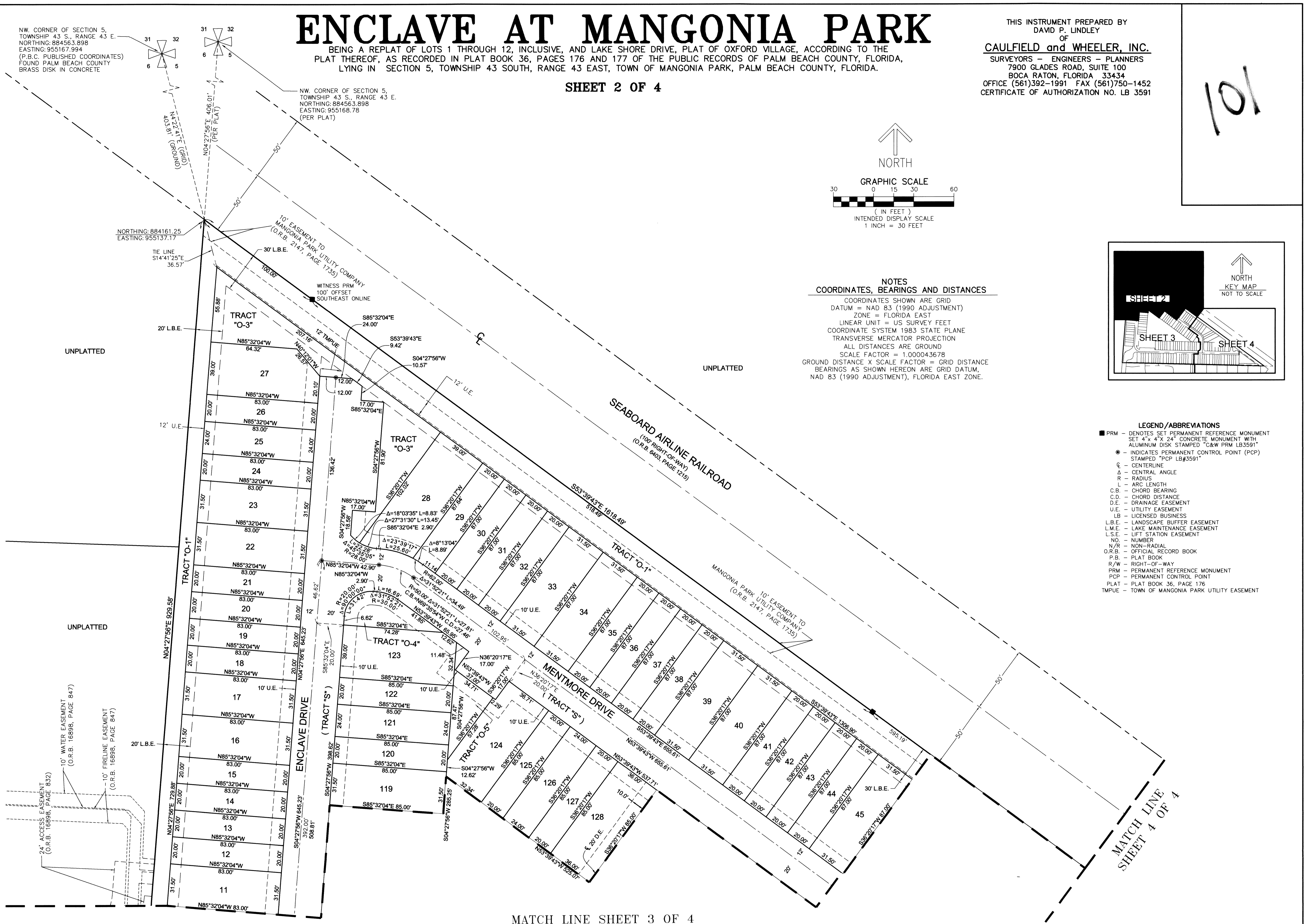


NOTES COORDINATES, BEARINGS AND DISTANCES

COORDINATES SHOWN ARE GRID
DATUM = NAD 83 (1990 ADJUSTMENT)
ZONE = FLORIDA EAST
LINEAR UNIT = US SURVEY FEET
COORDINATE SYSTEM 1983 STATE PLANE
TRANSVERSE MERCATOR PROJECTION
ALL DISTANCES ARE GROUND
SCALE FACTOR = 1.000043678
GROUND DISTANCE X SCALE FACTOR = GRID DISTANCE
BEARINGS AS SHOWN HEREON ARE GRID DATUM,
NAD 83 (1990 ADJUSTMENT), FLORIDA EAST ZONE.



- #### LEGEND/ABBREVIATIONS
- PRM - DENOTES SET PERMANENT REFERENCE MONUMENT
SET 4" x 4" x 24" CONCRETE MONUMENT WITH
ALUMINUM DISK STAMPED "C&W PRM LB3591"
 - - INDICATES PERMANENT CONTROL POINT (PCP)
STAMPED "PCP LB#3591"
 - ℄ - CENTERLINE
 - A - CENTRAL ANGLE
 - R - RADIUS
 - L - ARC LENGTH
 - C.B. - CHORD BEARING
 - C.D. - CHORD DISTANCE
 - D.E. - DRAINAGE EASEMENT
 - U.E. - UTILITY EASEMENT
 - LB - LICENSED BUSINESS
 - L.B.E. - LANDSCAPE BUFFER EASEMENT
 - L.M.E. - LAKE MAINTENANCE EASEMENT
 - L.S.E. - LIFT STATION EASEMENT
 - NO. - NUMBER
 - N/R - NON-RADIAL
 - O.R.B. - OFFICIAL RECORD BOOK
 - P.B. - PLAT BOOK
 - R/W - RIGHT-OF-WAY
 - PRM - PERMANENT REFERENCE MONUMENT
 - PCP - PERMANENT CONTROL POINT
 - PLAT - PLAT BOOK 36, PAGE 176
 - TMPUE - TOWN OF MANGONIA PARK UTILITY EASEMENT



MATCH LINE SHEET 3 OF 4

MATCH LINE
SHEET 4 OF 4